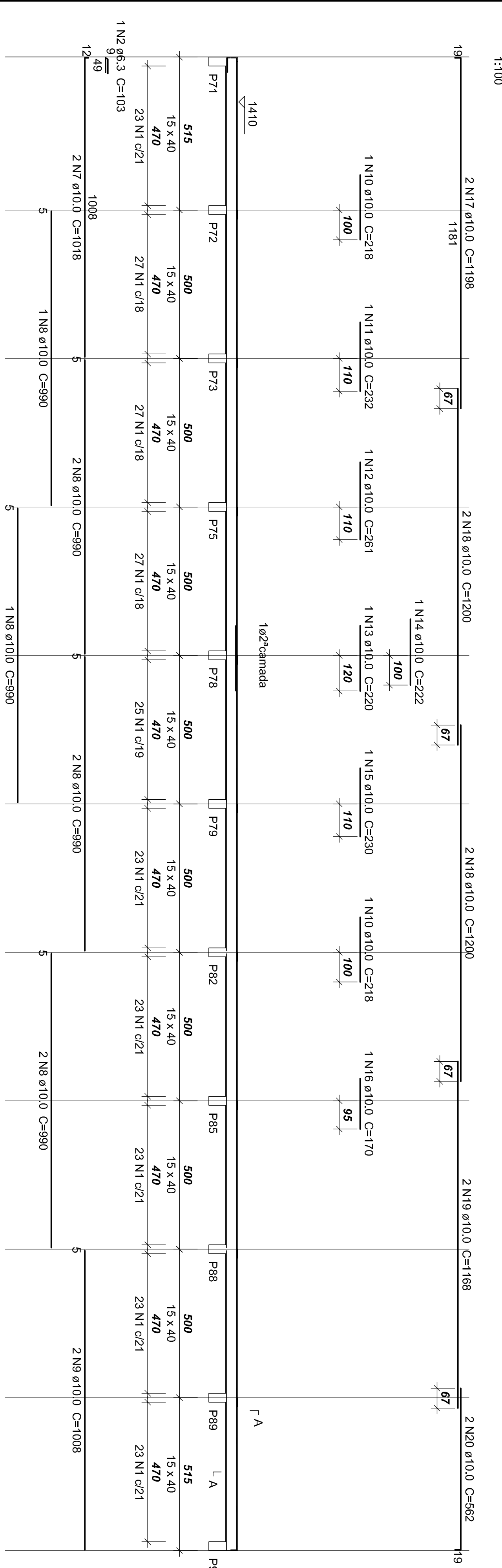
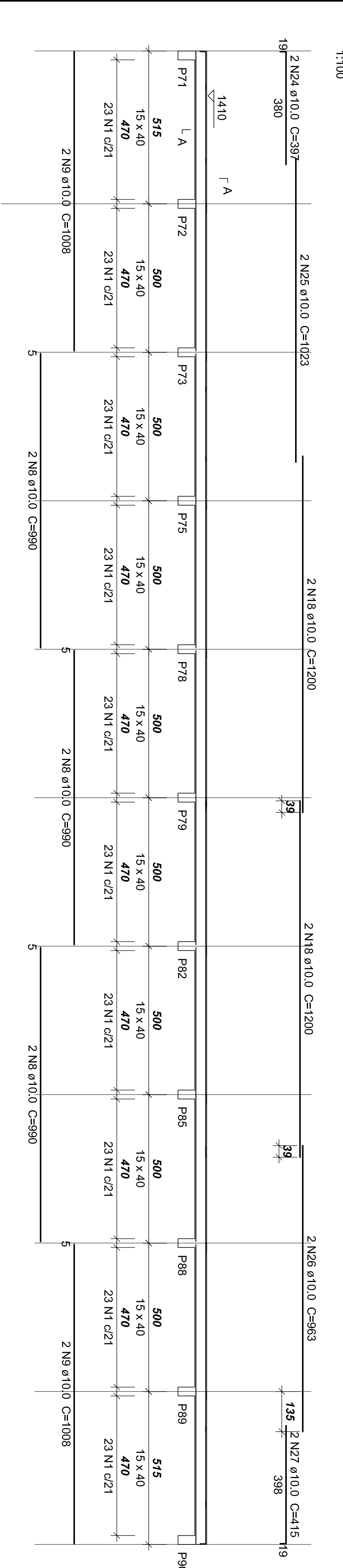


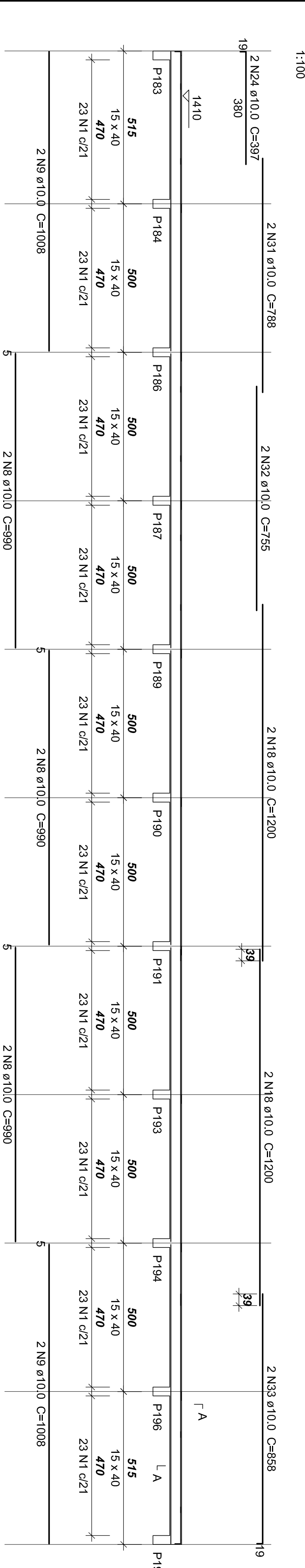
### V501 (15 x 40)



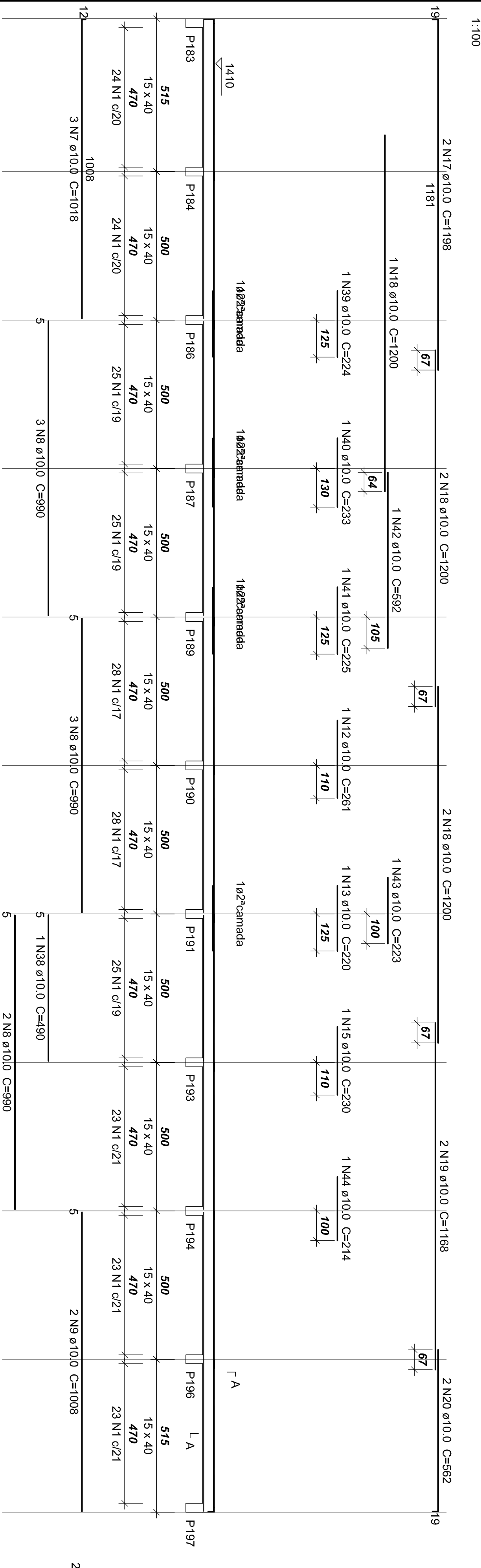
### V503 (15 x 40)



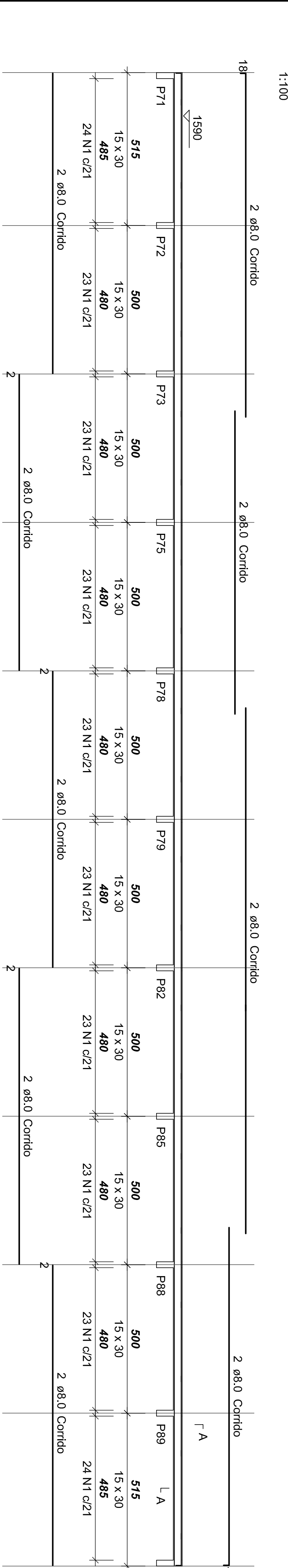
### V505 (15 x 40)



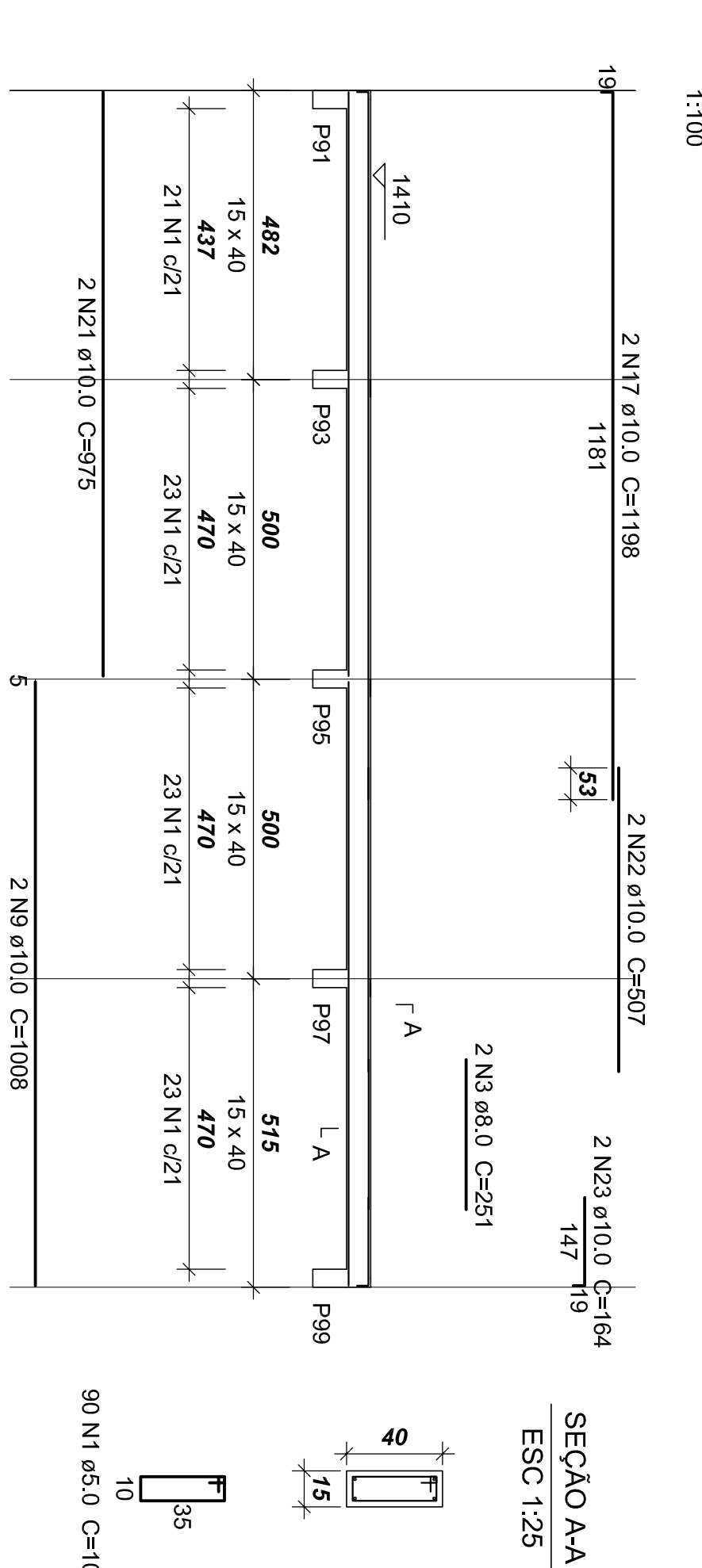
### V507 (15 x 40)



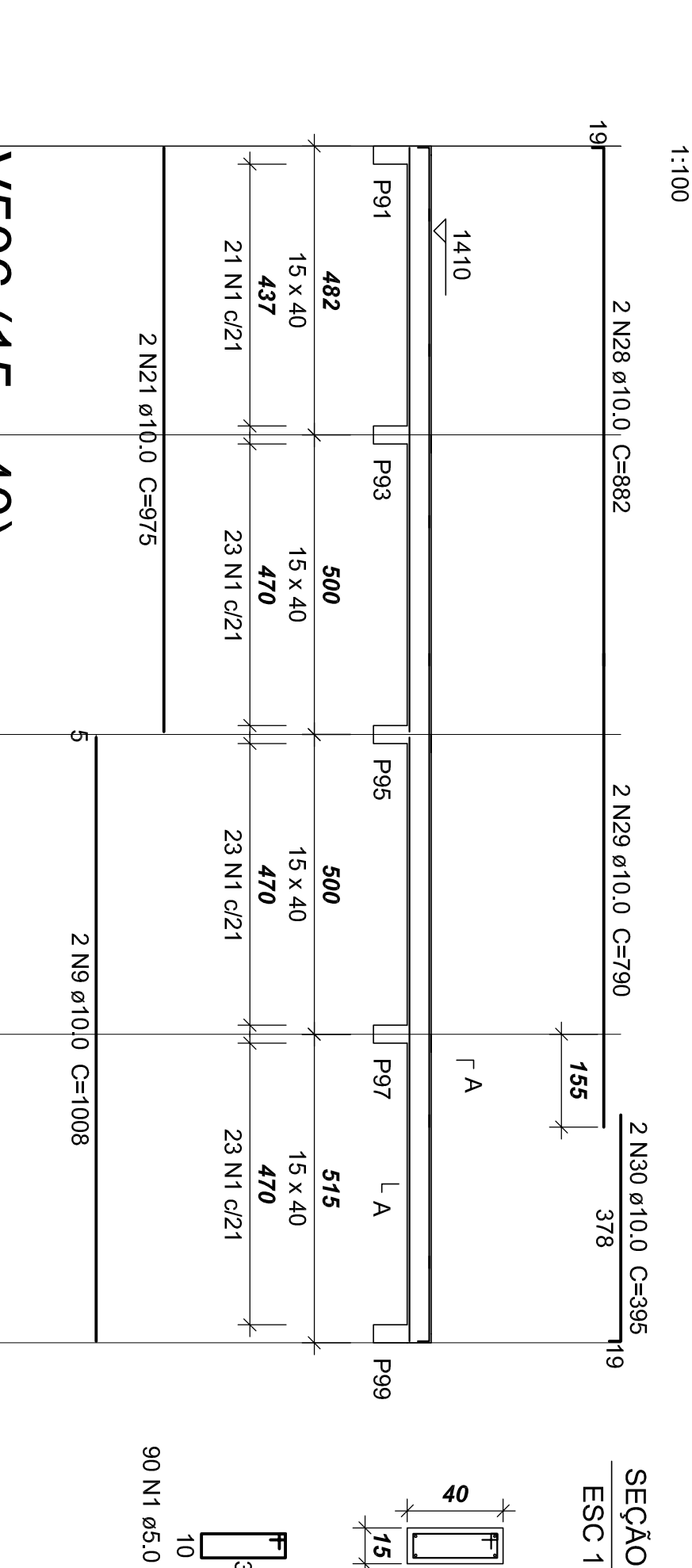
### VP (15 x 30)



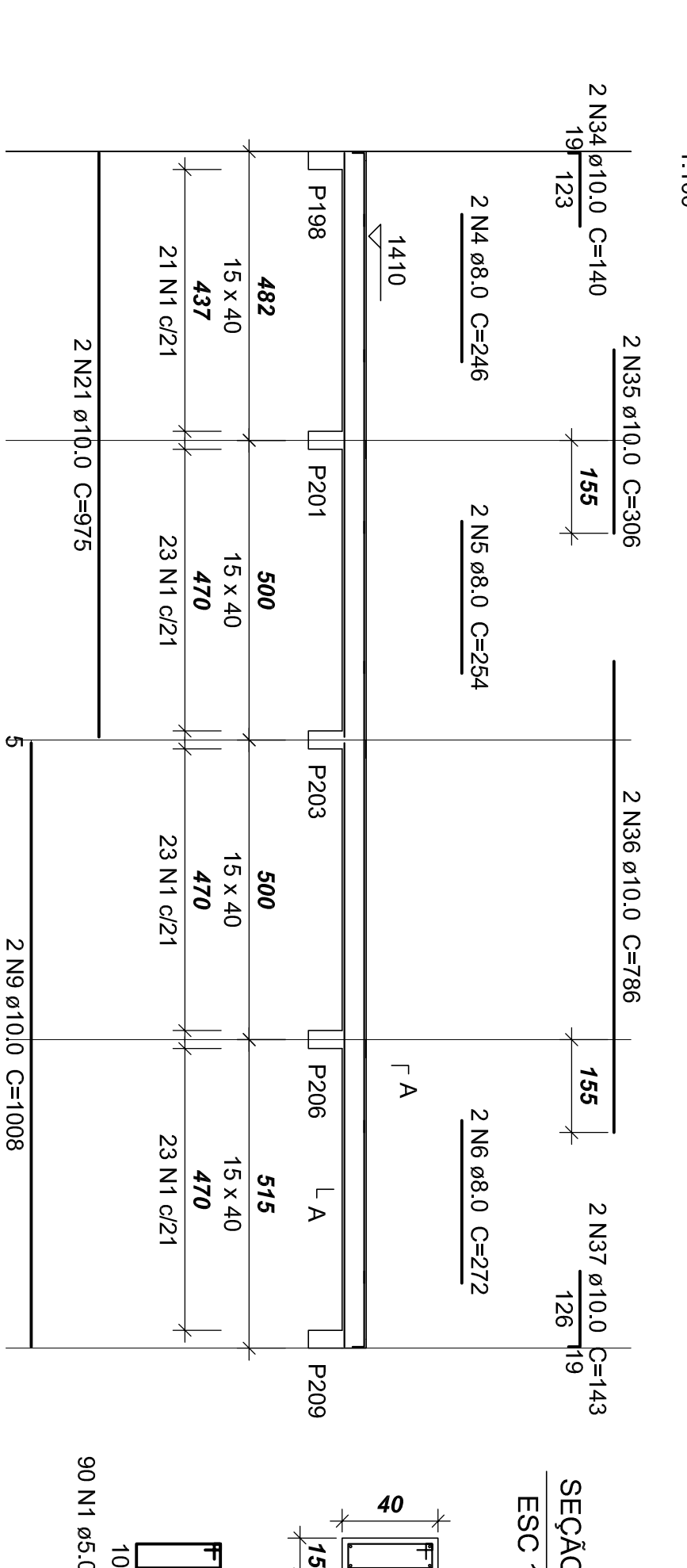
### V502 (15 x 40)



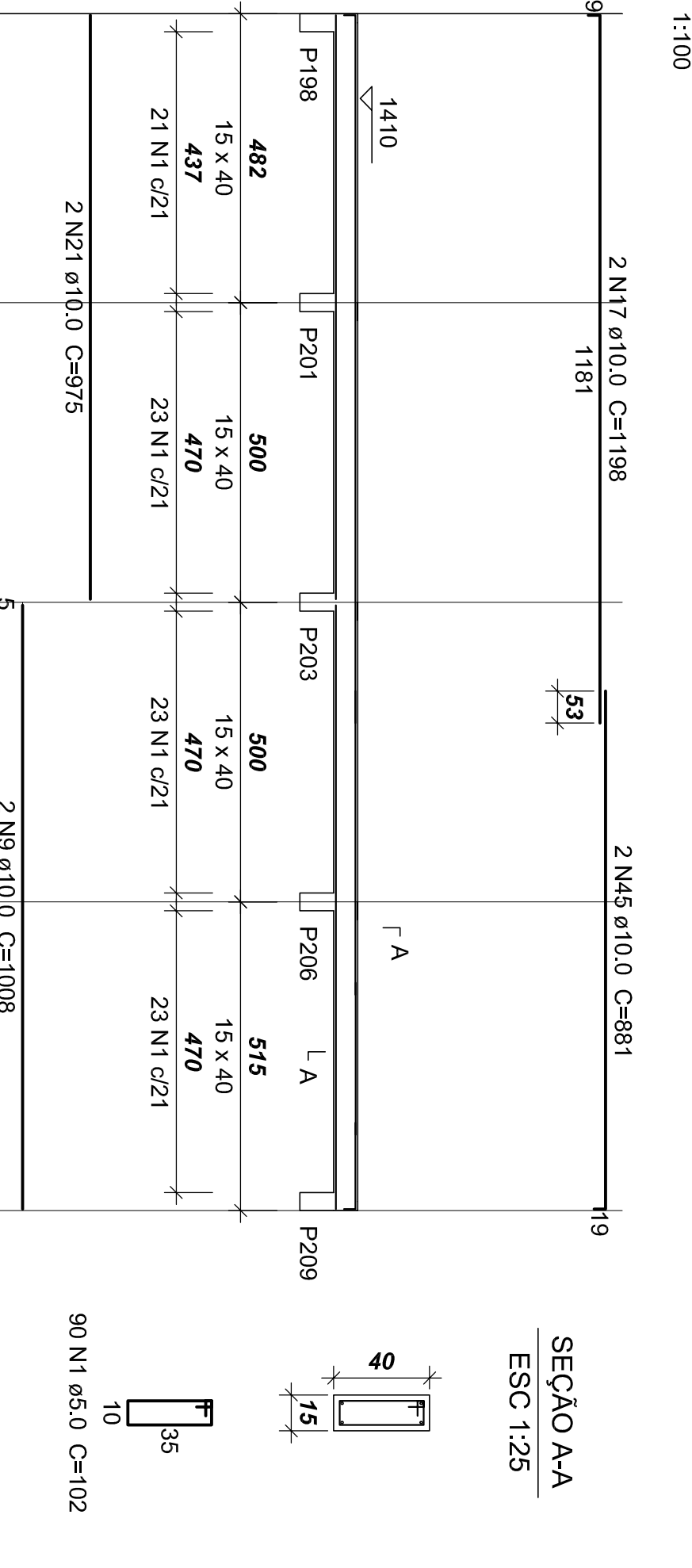
### V504 (15 x 40)



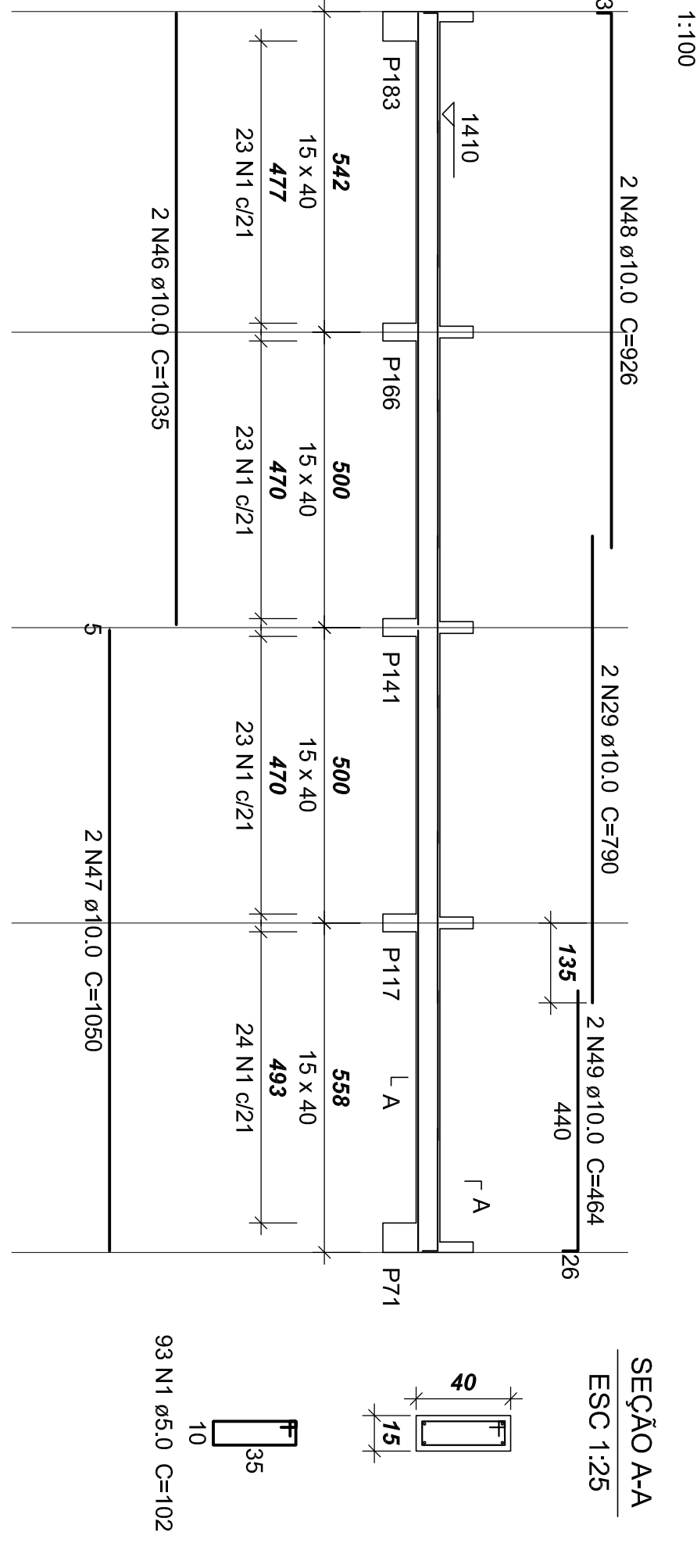
### V506 (15 x 40)



### V508 (15 x 40)



### V509 (15 x 40)



### Relação do aço Vigas Cobertura 2

| AÇO  | N  | DIAM | Q    | UNF  | C TOTAL |
|------|----|------|------|------|---------|
| CA60 | 1  | 5,0  | 1405 | 102  | 143310  |
| CA60 | 2  | 6,3  | 103  | 103  | 103     |
| CA60 | 3  | 8,0  | 2    | 246  | 492     |
| CA60 | 4  | 8,0  | 2    | 246  | 492     |
| CA60 | 5  | 8,0  | 2    | 246  | 492     |
| CA60 | 6  | 8,0  | 2    | 246  | 492     |
| CA60 | 7  | 10,0 | 5    | 1018 | 5090    |
| CA60 | 8  | 10,0 | 20   | 1008 | 20160   |
| CA60 | 9  | 10,0 | 2    | 218  | 436     |
| CA60 | 10 | 10,0 | 2    | 218  | 436     |
| CA60 | 11 | 10,0 | 1    | 232  | 232     |
| CA60 | 12 | 10,0 | 2    | 261  | 522     |
| CA60 | 13 | 10,0 | 2    | 261  | 522     |
| CA60 | 14 | 10,0 | 2    | 222  | 444     |
| CA60 | 15 | 10,0 | 2    | 230  | 460     |
| CA60 | 16 | 10,0 | 1    | 170  | 170     |
| CA60 | 17 | 10,0 | 9    | 1198 | 5984    |
| CA60 | 18 | 10,0 | 4    | 1188 | 4672    |
| CA60 | 19 | 10,0 | 4    | 562  | 2248    |
| CA60 | 20 | 10,0 | 4    | 562  | 2248    |
| CA60 | 21 | 10,0 | 8    | 975  | 7800    |
| CA60 | 22 | 10,0 | 2    | 507  | 1014    |
| CA60 | 23 | 10,0 | 2    | 507  | 1014    |
| CA60 | 24 | 10,0 | 1    | 214  | 214     |
| CA60 | 25 | 10,0 | 2    | 881  | 1762    |
| CA60 | 26 | 10,0 | 2    | 1035 | 2070    |
| CA60 | 27 | 10,0 | 2    | 1035 | 2070    |
| CA60 | 28 | 10,0 | 2    | 1035 | 2070    |
| CA60 | 29 | 10,0 | 2    | 1035 | 2070    |
| CA60 | 30 | 10,0 | 2    | 1035 | 2070    |
| CA60 | 31 | 10,0 | 2    | 1035 | 2070    |
| CA60 | 32 | 10,0 | 2    | 1035 | 2070    |
| CA60 | 33 | 10,0 | 2    | 1035 | 2070    |
| CA60 | 34 | 10,0 | 2    | 1035 | 2070    |
| CA60 | 35 | 10,0 | 2    | 1035 | 2070    |
| CA60 | 36 | 10,0 | 2    | 1035 | 2070    |
| CA60 | 37 | 10,0 | 2    | 1035 | 2070    |
| CA60 | 38 | 10,0 | 2    | 1035 | 2070    |
| CA60 | 39 | 10,0 | 2    | 1035 | 2070    |
| CA60 | 40 | 10,0 | 2    | 1035 | 2070    |
| CA60 | 41 | 10,0 | 1    | 233  | 233     |
| CA60 | 42 | 10,0 | 1    | 225  | 225     |
| CA60 | 43 | 10,0 | 1    | 592  | 592     |
| CA60 | 44 | 10,0 | 1    | 592  | 592     |
| CA60 | 45 | 10,0 | 1    | 592  | 592     |
| CA60 | 46 | 10,0 | 1    | 592  | 592     |
| CA60 | 47 | 10,0 | 1    | 592  | 592     |
| CA60 | 48 | 10,0 | 1    | 592  | 592     |
| CA60 | 49 | 10,0 | 2    | 464  | 928     |

### Resumo do aço

| AÇO        | DIAM | C TOTAL | PESO  |
|------------|------|---------|-------|
| CA60       | 6,3  | 1,1     | 0,3   |
| CA60       | 8,0  | 20,5    | 8,1   |
| CA60       | 10,0 | 1433,1  | 56,9  |
| CA60       | 5,0  | 1433,1  | 56,9  |
| PESO TOTAL |      |         | 122,3 |

Vol. de concreto total (C=30) = 18,12 m³

Área de forma total = 286,99 m²